

• THREE BEDROOM • CLOSE TO AMNETIES • CONSERVATORY • EXTENDED • EXCELLENT TRANSPORT LINKS

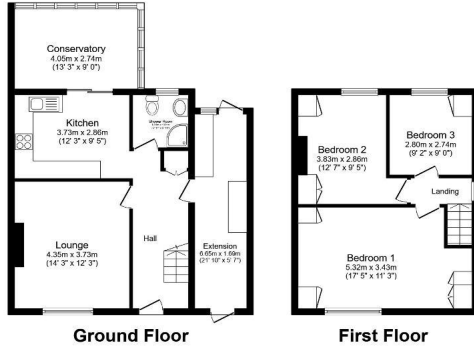
## Description

Kingsly Group is delighted to offer to the market this three-bedroom family home. The property benefits from a spacious living room, fully fitted kitchen, downstairs shower room, conservatory, and a side extension and private rear garden. On the first floor you will find three good-sized bedrooms.

## Location

The property is situated in a highly sought-after area of Enfield. The property benefits from excellent transport links and is served by Silver Street Overground Station (0.7 miles) and Edmonton Green Overground (0.8 Miles). It also has easy access to the A406 and A10.





Total floor area 106.8 m<sup>2</sup> (1,149 sq.ft.) approx

This floor plan is for illustrative purposes only. It is not drawn to scale. Any measurements, floor areas (including any total floor area), openings and orientation are approximate. No details are guaranteed, they cannot be relied upon for any purpose and they do not form part of any agreement. No liability is taken for any error, omission or misstatement. A party must rely upon its own inspection(s). Powered by [www.focalagent.com](http://www.focalagent.com)