

- FOUR BEDROOM • EXCELLENT TRANSPORT LINKS • TERRACED

Description

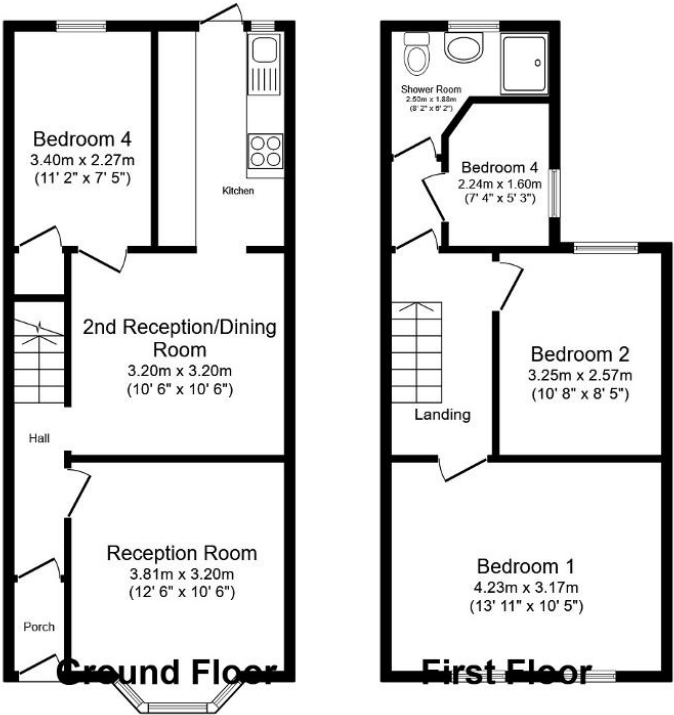
Kingsly Group is delighted to offer this three-bedroom family home to the market. The property benefits from two reception rooms, a fully fitted kitchen, a ground-floor bedroom, and a good-sized private garden. On the first floor, you will find three bedrooms and a shower room. This property makes a perfect family home or an ideal investment opportunity.

Location

The property offers excellent transport links and is served by Silver Street train station (0.6 miles) and also provides easy access to the A10 and A406 North Circular Roads ideal for commuters. The property is also in close proximity to North Middlesex Hospital (0.7 miles)







Total : 80.9 sq.m. (871 sq.ft.) approx
 Sizes and dimensions are approximate, actual may vary.

