



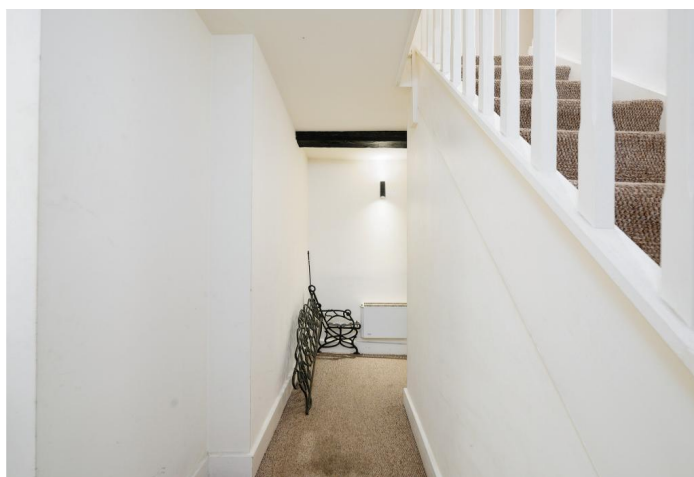
- TWO BEDROOM • LISTED BUILDING • EXPOSED WOODEN BEAMS • HIGH STREET

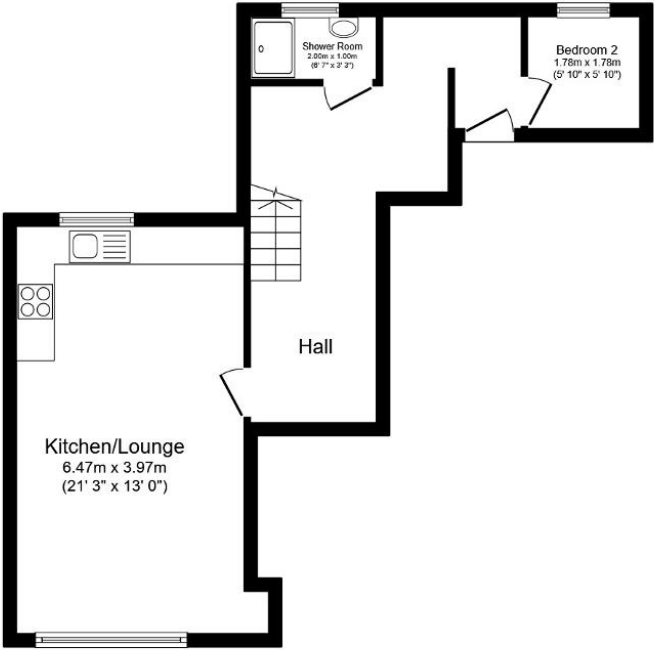
Description

Kingsly Group is delighted to offer this stunning two-bedroom property to the market. The property is truly full of character. The ground floor of the property benefits from a spacious double bedroom and a large family bathroom. On the first floor, you are greeted with a spacious open-plan kitchen/living room with beautiful exposed wooden beams, a bedroom, and a separate shower room and WC.

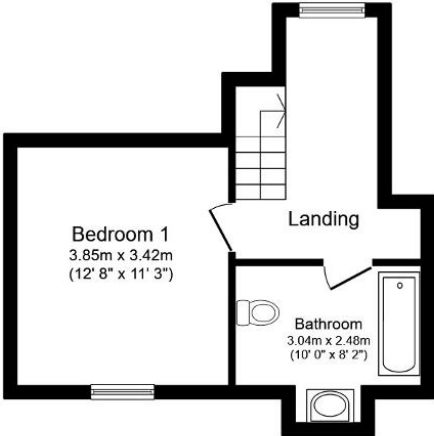
Location

Situated on the high street which offers a host of restaurants shops and bars. Also benefits from easy access to M11 and A414





Ground Floor



First Floor

Total floor area 73.5 sq.m. (791 sq.ft.) approx
This floor plan is for illustrative purposes only. It is not drawn to scale. Any measurements, floor areas (including any total floor area), openings and orientation are approximate. No details are guaranteed, they cannot be relied upon for any purpose and they do not form part of any agreement. No liability is taken for any error, omission or misstatement. A party must rely upon its own inspection(s). Powered by www.focalagent.com

Energy Efficiency Rating			
Score	Energy rating	Current	Potential
92+	A		
81-91	B		
69-80	C		
55-68	D		55 D
39-54	E		
21-38	F	25 F	
1-20	G		