

• ONE BEDROOM • HIGH STREET • EXPOSED WOODEN BEAMS • FULL OF CHARACTER • LISTED BUILDING

Description

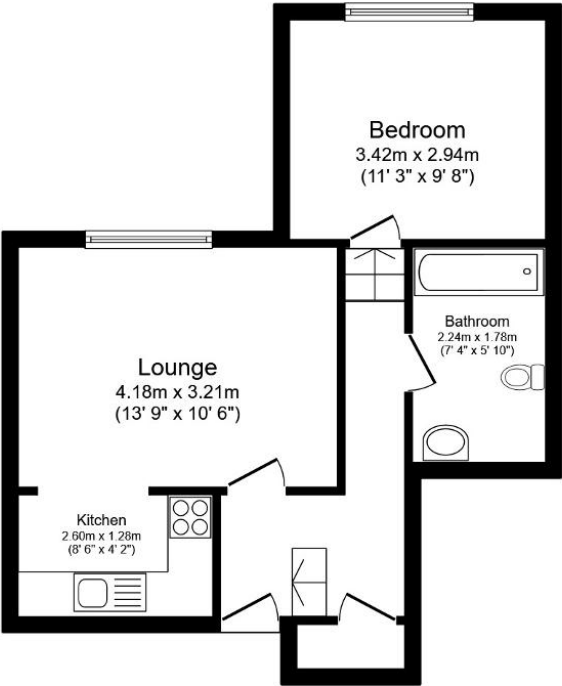
Kingsly Group is delighted to offer this truly stunning one-bedroom property to the market. The property is packed with character, upon entering the property you are greeted with a spacious living room/ open plan kitchen with beautiful exposed wooden beams a large double bedroom, and a family bathroom.

Location

Situated on the high street which offers a host of restaurants shops and bars. Also benefits from easy access to M11 and A414







Total floor area 42.3 sq.m. (456 sq.ft.) approx

This floor plan is for illustrative purposes only. It is not drawn to scale. Any measurements, floor areas (including any total floor area), openings and orientation are approximate. No details are guaranteed, they cannot be relied upon for any purpose and they do not form part of any agreement. No liability is taken for any error, omission or misstatement. A party must rely upon its own inspection(s). Powered by www.focalagent.com

Energy Efficiency Rating			
Score	Energy rating	Current	Potential
92+	A		
81-91	B		
69-80	C		
55-68	D		55 D
39-54	E		
21-38	F	25 F	
1-20	G		