

- BALCONY • LIFT • THREE BEDROOMS • EXCELLENT LOCATION • CLOSE TO CLISSOLD PARK & RESERVOIRS • EXCELLENT TRANSPORT LINKS

## Description

Offering to the market this stunning three-bedroom purpose-built flat. The property benefits from a large reception room, three very good-sized bedrooms, a separate kitchen, a family bathroom, and a separate W/C.

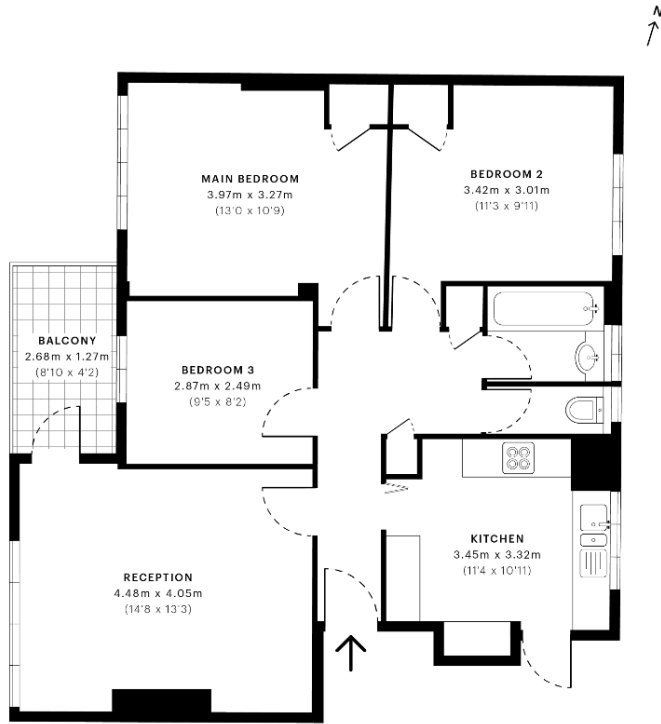
## Location

The location of this property is truly perfect, the property benefits from being right behind the reservoirs offering stunning walks and views. If that is not enough you are right beside Clissold park offering even more tranquil green open spaces.

The transport links are excellent with Manor house underground station (0.03 miles) (Picadilly Line) offering direct access into central London.







- First Floor



Some level and floor area were produced from drone data.  
Should installation of Chancel's Surveyor's Paper to Measure (Steel Balls).  
Note and pictures are illustrative only and excluded from all area calculations.  
Due to rounding up, numbers may not add up exactly.  
All measurements are given to the individual room, length and width.  
See the baseline on points of measurements captured in the scan.

PHOTO REFERENCE: 16/11/2022 10:00 AM  
SPEC ID: 563840a75516f50df5afae0b

