



- ONE BEDROOM • CLOSE TO AMENITIES • GREAT TRANSPORT LINKS • LONG LEASE • PARKING FOR ONE •
CYCLE SHED

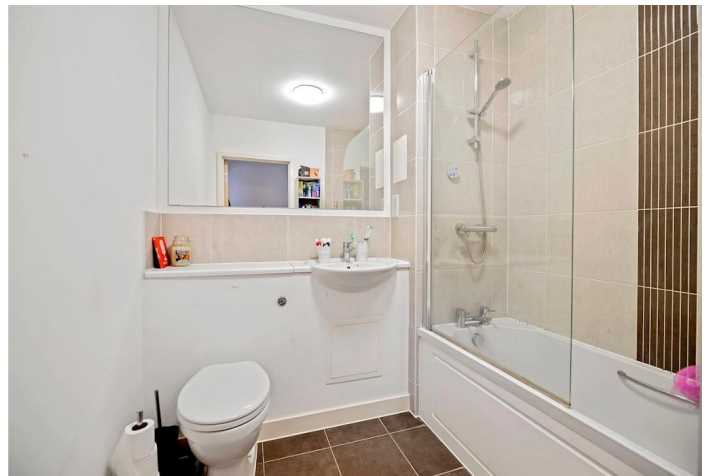
Description

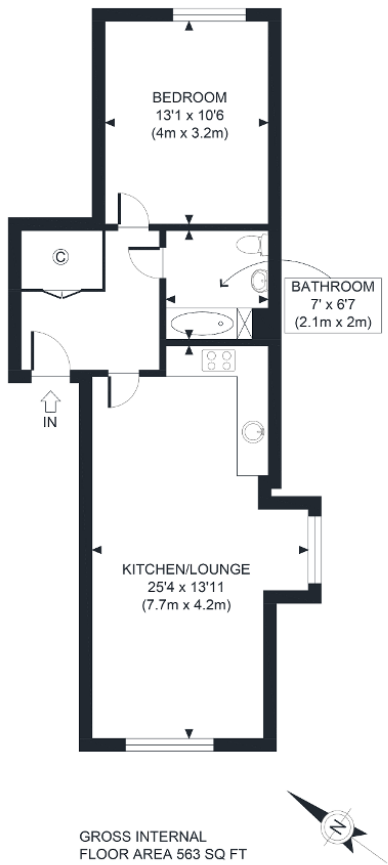
Stunning one double bedroom apartment, immaculately presented throughout, and set within the modern Brenley Park purpose built development. The property offers superb, modern accommodation throughout, including a bright and spacious open plan through lounge/fully integrated kitchen.

Accommodation comprises entrance hall with large inbuilt storage, leading to the spacious open plan reception/kitchen. The kitchen area comprises an ultra-modern range of matching wall and base units, with work surfaces incorporating single drainer sink unit, halogen hob with overhead extractor and electric oven below, and further integrated appliances. Generously sized double bedroom, and a further modern tiled bathroom accessed via the hallway.

Brenley Park itself is an attractive development with pleasant open spaces and parkland, all set within easy access of Mitcham Eastfields station providing excellent links into Central London. Mitcham town centre is just a short distance away offering a variety of shops, supermarkets and amenities, and the open spaces of Mitcham Common are also close-by.

Viewings of this stunning apartment are highly recommended.





APPROX. GROSS INTERNAL FLOOR AREA 563 SQ FT / 52 SQM Disclaimer: Floor plan measurements are approximate and are for illustrative purposes only. While we do not doubt the floor plan accuracy and completeness, you or your advisors should conduct a careful, independent investigation of the property in respect of monetary valuation	Lear House - CR4	
	date	19/08/20
	photoplan	

